



SPECIFICATION

Supply Voltage:	100-250V AC to driver
Primary Material:	Aluminium
Finish:	Stone-Rumbled™ Aluminium, Black
Weight:	4.0kg
Mounting:	Small Monopoint, Large Monopoint, Disc Monopoint Track Adapter
IP Rating:	IP20
CRI:	90 CRI
Luminous Flux:	4050 lm / 2700K 4300 lm / 3000K 4600 lm / 3500K (by request) 4750 lm / 4000K
Luminaire Efficacy:	up to 96.9 lm/W
Current (mA max.):	1050 mA
Power Consumption (max. typ.):	41.4 W
Colour Temperature:	2700K, 3000K, 3500K (by request), 4000K
Colour Consistency:	≤ 1x2 MacAdam Ellipses
Colour Stability:	<0.003 Δu.v.' 50,000 hrs
Lumen Maintenance:	50,000 hrs L70/B0/F0
Optics / Beam Angles:	21°, 38°, 59°, UGR
Accessories:	Honeycomb Louvre, Concentric Louvre
Operating Temp:	Ambient -20°C/+25°C
Control:	switched, 1-10V, DALI, Casambi
Standard / Certification:	CE UKCA [BS EN 60598] Manufactured in line with UL1598
Manufacture:	UK

PRODUCT DESCRIPTION

Reflektter XL Pendant is a light like no other. Made from heavy-gauge, spun aluminium. Remote / integrated driver options. Configurable high-performance light engine with comprehensive BIM and photometry data. Available in VOC free Eco paint finishes or Stone Rumbled for maximum Circular Economy. Made in the UK and tested to BS EN 60598 | CE | UKCA.



Small Monopoint



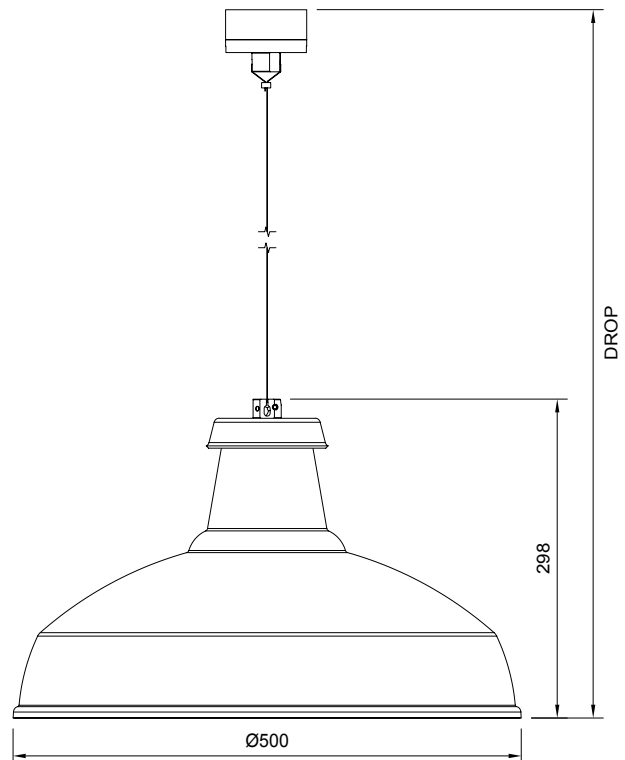
Large Monopoint



Track Adapter



Disc Monopoint



SPECIFICATION / PRODUCT CODE

EXAMPLE: RXP-SR-SM-2700-SW-21-NA

FINISH Stone Rumbled [SR] Black [BL]	MOUNTING Small Monopoint [SM] Large Monopoint [LM] Disc Monopoint [DM] Track Adapter [TA]	CCT 2700K [2700] 3000K [3000] 3500K [3500] 4000K [4000]	CONTROL Switched [SW] DALI [DA] 1-10V [AN] CASAMBI [CA]	BEAM ANGLE 21° [21] 38° [38] 59° [59] UGR [UG]	ACCESSORIES No Accessories [NA] Honeycomb Louvre [HL] Concentric Louvre [CL]
---	--	--	--	---	--

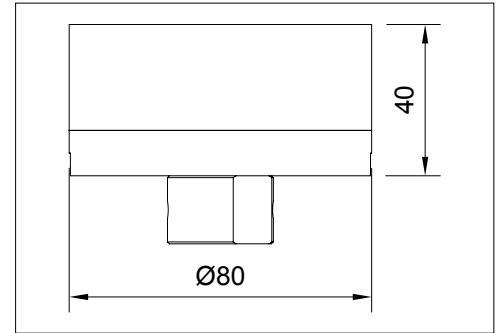
MOUNTINGS



SMALL MONOPOINT

Standard mounting with room for electrical connections. Driver to be mounted in remote location

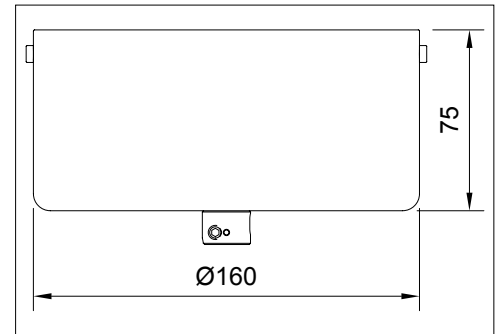
Finish: Stone-Rumbled™
Black
Material: Aluminium
Voltage Type: AC / DC
Certification: CE / UKCA



LARGE MONOPOINT

Built to house drivers locally to the luminaire.

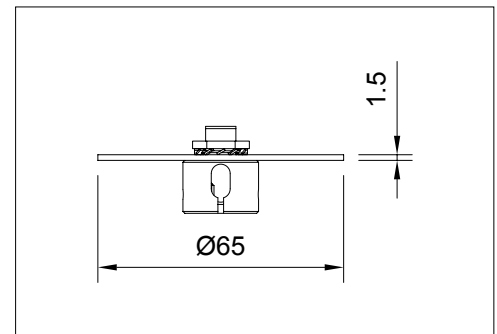
Finish: Stone-Rumbled™
Black
Material: Aluminium
Voltage Type: AC / DC
Certification: CE / UKCA



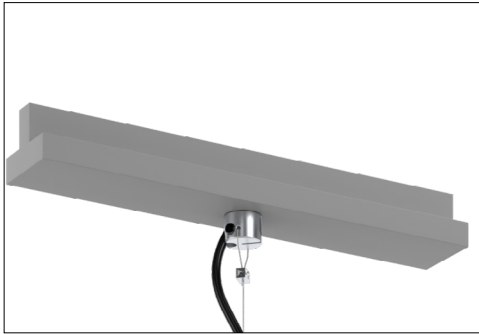
DISC MONOPOINT

50.8mm mounting holes for UK conduit boxes. Other sizes available on request.

Finish: Stone-Rumbled™
Black
Material: Aluminium
Voltage Type: AC / DC
Certification: CE / UKCA



MOUNTINGS



TRACK ADAPTER

Multiple track adapter options to suit your installed system. Mains voltage. Built in drivers.
Contact us to discuss your specific requirements.

Finish: Grey / Silver
Black
White

Voltage Type: AC

DRIVERS - AC VOLTAGE (100-250V AC)

The following constant current driver types are used.

Typically, for remote drivers with output under 2000lm: 20W SOLOdrive; for integral (Large Monopoint) drivers under 2000lm: 30W SOLOdrive; for all drivers over 2000lm: 50W SOLOdrive.

MAXIMUM WIRING DISTANCE AT FULL LOAD - for 0.5mm² CSA (20 AWG).

AWG VALUE	20	19	18	17	16
Distance (m)	14	18	22	28	36
Distance (ft)	46	59	72	92	118



EldoLED 20W SOLOdrive

Nominal input voltage: 220-240V AC
Maximum input current: 0.15 A
Maximum inrush current: 1 A²s @230V / 50Hz
Efficiency at full load: 80%
Power factor at full load: > 0.95
Maximum output power: 20 W
LED output range: 150-1050 mA

Control Protocol: DALI
0-10V / 1-10V
CASAMBI
Dimming range: 100% - 0.1%
Size: 160 x 42 x 31 mm
Weight: 125 g
ACB Loading: Type B/C10 B/C13 B/C16
Max driver qty 66 86 106



EldoLED 30W SOLOdrive

Nominal input voltage: 100-250V AC
Maximum input current: 0.35 A @120V / 60Hz
Maximum inrush current: < 200 mA²s @120V / 60Hz
Efficiency at full load: 85%
Power factor at full load: > 0.9
Maximum output power: 30 W
LED output range: 150-1400 mA

Control Protocol: DALI
0-10V / 1-10V
CASAMBI
Dimming range: 100% - 0.1%
Size: 130 x 72 x 28 mm
Weight: 286 g
ACB Loading: Type B/C10 B/C13 B/C16
Max driver qty 33 43 53



EldoLED 50W SOLOdrive [ETL listed]

Nominal input voltage: 100-250V AC
Maximum input current: 0.7 A
Maximum inrush current: 30 mA²s @277V / 50Hz
Efficiency at full load: 87%
Power factor at full load: > 0.9
Maximum output power: 50 W
LED output range: 150-1400 mA

Control Protocol: DALI
0-10V / 1-10V
CASAMBI
Dimming range: 100% - 0.1%
Size: 153 x 77 x 30 mm
Weight: 293 g
ACB Loading: Type B/C10 B/C13 B/C16
Max driver qty 14 18 22



LENSES



Type: Lens 21°, 38°, 59°
Material: PMMA
Dimensions: 70mm diameter, 13mm height
Fixing: Twist on/off



Type: Unified Glare Ration Filter (UGR)
Material: Polycarbonate
Dimensions: 493mm diameter, 2mm height
Fixing: Screws/brackets

ACCESSORIES



Type: Honeycomb Louvre
Material: (Anodised) Aluminium
Dimensions: 71mm diameter, 3mm height
Fixing: Spring Clip



Type: Concentric Louvre
Material: Stainless Steel
Dimensions: 500mm diameter, 80mm height
Fixing: Tension